



# A M E R I C A N G E M S O C I E T Y <sup>TM</sup>

## DIAMOND QUALITY <sup>TM</sup> CERTIFICATE

Light Performance 0  
Performance Factors 0  
Finish 0  
Polish Ideal  
Symmetry Ideal

AGS: SAMPLE      DATE: 04-01-07

SHAPE AND STYLE: Round Brilliant

CARAT WEIGHT: 1.274 cts.

MEASUREMENTS: 7.02 - 7.02 x 4.30mm

CUT GRADE: AGS Ideal 0

COLOR GRADE: AGS 0 (D)      CLARITY GRADE: AGS 0 (F)

**COMMENTS:**

Fluorescence Negligible

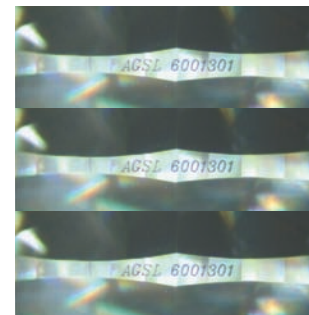
CUT SCALE	AGS	0	1	2	3	4	5	6	7	8	9	10
-----------	-----	---	---	---	---	---	---	---	---	---	---	----

COLOR SCALE	AGS	0	0.5	1.0	1.5	2.0	2.5	3.0	3.5	4.0	4.5	5.0	5.5	6.0	6.5	7.0	7.5	8.0	8.5	9.0	9.5	10.0	To	Fancy Yellow
	GIA	D	E	F	G	H	I	J	K	L	M	N	O	P	Q	R	S	T	U	V	W	X	Y	Z
		COLORLESS			NEAR COLORLESS			FAINT			VERY LIGHT			LIGHT										

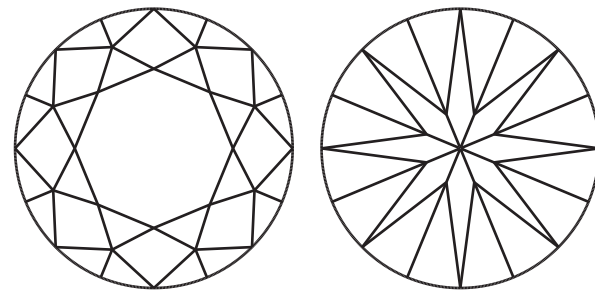
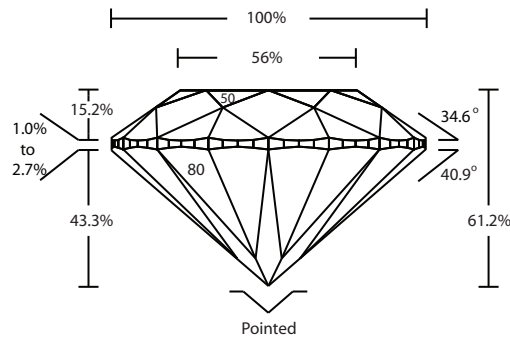
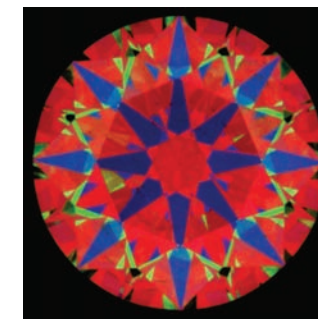
CLARITY SCALE	AGS	0	1	2	3	4	5	6	7	8	9	10
	GIA	FLAWLESS / IF	VVS1	VVS2	VS1	VS2	SI1	SI2	I1	I2	I3	

IMPORTANT NOTICE: ALL THREE QUALITY FACTORS OF CUT, COLOR, AND CLARITY CAN DRAMATICALLY AFFECT THE BEAUTY AND VALUE OF A DIAMOND. BECAUSE OF CUTTING, DIAMONDS WITH THE SAME COLOR AND CLARITY GRADES CAN VARY IN VALUE BY AS MUCH AS 50% OR MORE. THEREFORE, IT IS ADVISABLE TO CONSULT A CERTIFIED GEMOLOGIST® OR OTHER CREDENTIALLED GEMOLOGIST, BEFORE PURCHASING THIS DIAMOND.

LASER INSCRIPTIONS



ASET™ IMAGE



PLOT INFORMATION: THE CLARITY GRADE IS DIAGRAMMED USING THE CLARITY SYMBOLS CONTAINED IN THE AMERICAN GEM SOCIETY DIAMOND GRADING STANDARDS. RED MARKS INDICATE INCLUSIONS; GREEN MARKS INDICATE EXTERNAL BLEMISHES.

- Bruise
- Cavity
- Chip
- Cleavage
- Cloud
- Crystal
- Extra Facet
- Feather
- Indented Natural
- Knot
- Pulse Laser
- Laser Drill Hole
- Natural
- Needle
- Pinpoint
- Twinning Wisp

Signature of American Gem Society Titleholder

Date Signed

Copyright © 2007 American Gem Society. All Rights Reserved.

# DIAMOND QUALITY™ CERTIFICATE

AMERICAN GEM SOCIETY LABORATORIES™

## IMPORTANT LIMITATIONS

THIS DIAMOND QUALITY™ CERTIFICATE (“CERTIFICATE”) IS NOT A VALUATION OR APPRAISAL, AND AMERICAN GEM SOCIETY LABORATORIES, LLC (“AGS LABS”) HAS MADE NO REPRESENTATION OR WARRANTY REGARDING THE VALUE OF THE DIAMOND DESCRIBED HEREIN. THIS CERTIFICATE CONTAINS A DESCRIPTION OF THE CHARACTERISTICS OF THE DIAMOND BASED UPON THE APPLICATION OF THE GRADING TECHNIQUES AND EQUIPMENT AVAILABLE TO AND USED BY AGS LABS AT THE TIME OF ITS EXAMINATION. OTHER DESCRIPTIONS OF THE DIAMOND MAY DIFFER DEPENDING UPON WHEN, HOW, AND BY WHOM THE DIAMOND IS GRADED AND MAY DIFFER IN THE FUTURE AS A RESULT OF CHANGES AND IMPROVEMENTS IN GRADING TECHNIQUES AND EQUIPMENT. THIS DIAMOND HAS BEEN GRADED USING CURRENTLY AVAILABLE TECHNOLOGY AND EQUIPMENT.

AGS LABS AND ITS EMPLOYEES AND AGENTS SHALL NOT BE LIABLE FOR ANY LOSS, DAMAGE, OR EXPENSE RESULTING FROM THIS CERTIFICATE OR FOR ITS ISSUANCE OR USE EXCEPT FOR THE NEGLIGENCE OR WILLFUL MISCONDUCT OF THE AGS LABS OR ITS EMPLOYEES OR AGENTS WHICH RESULTS IN THE CERTIFICATE CONTAINING INACCURATE OR INCORRECT INFORMATION. IN NO EVENT SHALL AGS LABS AND ITS EMPLOYEES AND AGENTS BE LIABLE FOR INDIRECT, EXEMPLARY, SPECIAL, OR CONSEQUENTIAL DAMAGES FOR ANY SUCH NEGLIGENTLY INACCURATE OR INCORRECT INFORMATION IN THIS CERTIFICATE OR FROM THE ISSUANCE OR USE OF THIS CERTIFICATE.

AS A PROTECTION TO THE PUBLIC AND AGS LABS, NEITHER THIS CERTIFICATE NOR THE NAME, TRADEMARKS, OR SERVICE MARKS OF AGS LABS OR ITS AFFILIATE, THE AMERICAN GEM SOCIETY, MAY BE USED IN WHOLE OR IN PART FOR PURPOSES OF ADVERTISING, PUBLICITY, OR PROMOTION, AND THIS CERTIFICATE MAY NOT BE REFERRED TO AS AN APPRAISAL OR VALUATION. AGS LABS MAKES NO REPRESENTATION OR WARRANTY OF THE ORIGIN OF THE DIAMOND DESCRIBED IN THIS CERTIFICATE. HOWEVER, MEMBERS OF THE AMERICAN GEM SOCIETY MUST COMPLY WITH UNITED NATIONS RESOLUTIONS TO PURCHASE DIAMONDS FROM LEGITIMATE SOURCES NOT INVOLVED IN FUNDING CONFLICT.

THIS DIAMOND WAS EXAMINED AND TESTED USING SOME OR ALL OF THE FOLLOWING: PROPORTION ANALYZER, DIGITAL CARAT BALANCE, MASTER COLOR COMPARISON DIAMONDS, OPTICAL COMPARATOR, STANDARDIZED AND SPECIALIZED LIGHTING, 10X MAGNIFICATION (FULLY CORRECTED LOUPE AND BINOCULAR MICROSCOPE), LONG — AND SHORTWAVE ULTRAVIOLET LIGHT, SPECTROSCOPE, AND SPECTROPHOTOMETER.

AMERICAN GEM SOCIETY LABORATORIES, LLC  
8917 W. SAHARA AVE., LAS VEGAS, NV 89117  
TEL: 702.233.6120 FAX: 702.233.6125 EMAIL: SUPPORT@AGSLAB.COM  
WWW.AGSLAB.COM



A M E R I C A N G E M  
S O C I E T Y™

DIAMOND QUALITY™ CERTIFICATE